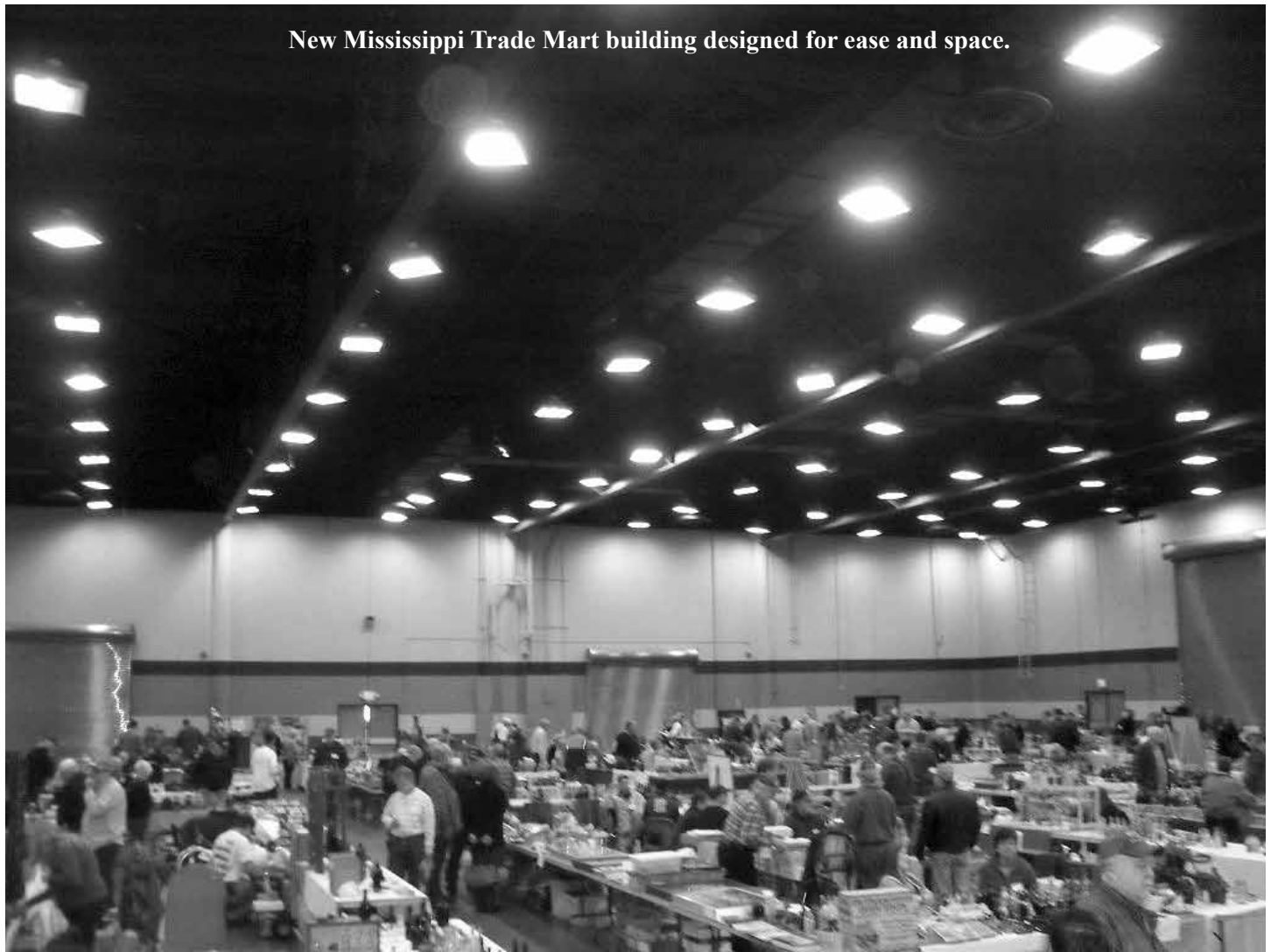


New Mississippi Trade Mart Building is Site of January Show



New Mississippi Trade Mart building designed for ease and space.

Overhead view reveals wide aisles, full tables, and excellent crowds at this Mississippi January bottle and advertising show.

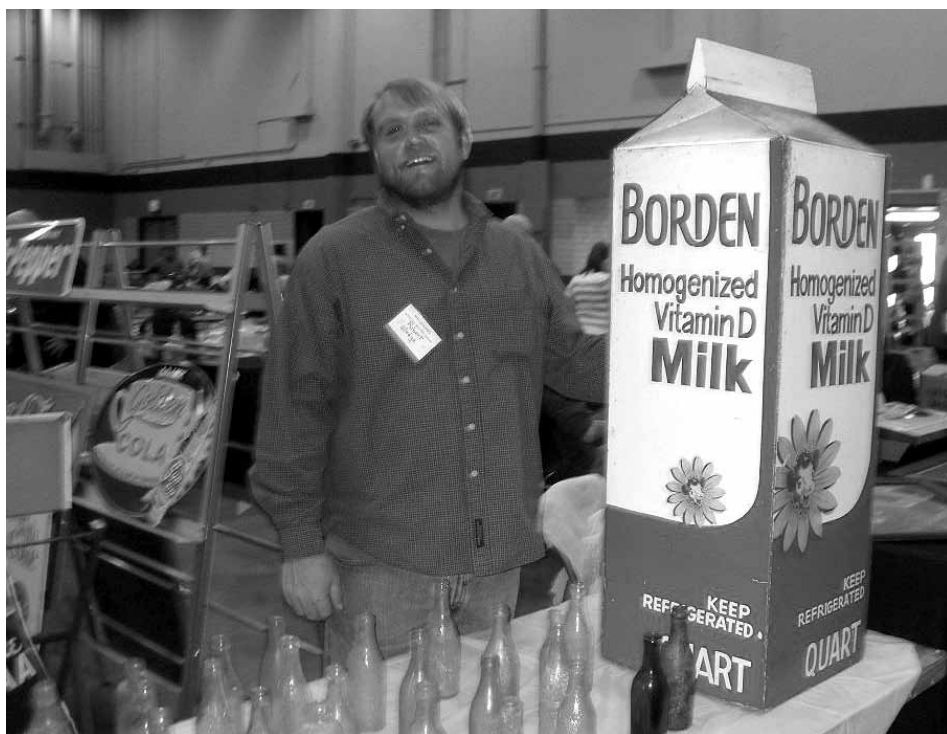


Exterior view of new Mississippi Trade Mart building.

With great relief, dealers and viewers alike welcomed the relocation of the January Mississippi Bottle Show to the modern Trade Mart Building located on the Mississippi State Fairgrounds in Jackson. The former building, though smaller with less rent, had been built during the period of the Second World War in Quonset hut style. It was showing recurring issues with heat and water. Show chairman, Rev. John Sharp, confided that because the show was expanding year by year, and with the nation's economy beginning to improve, the show organizers felt it



John Sharp is pleased with show's continued success. The modern building is versatile, well heated and lighted, making everyone comfortable to look at glass.



Dealer Robert Sledge with very rare Elsie Milk Carton used during Borden Railroad Exhibit at state fairs following the Second World War. Robert is from Florence, Alabama.

was time to go into a larger facility. "Other antique and bottle shows watch our show with interest because as Mississippi goes, so goes the show's for the rest of the year," one observer said as he surveyed dealer preparation during busy Friday night setup.

This is a show that has not charged doorway admission, though that policy may change if expenses are not met. Until now dealer table rent has paid for all expenses, including a free catered supper during Friday setup.

This year's show brought more than 100 dealers, 150 tables, and an unprecedented customer attendance of nearly 500 for the Saturday-only show.

