

# PAPER TRAIL

a feature showcasing the contributions of "Bottles and Extras" readers

Edited by Steve Ketcham



## T. A. Snider Preserve Company

According to an 1888 article cited by Betty Zumwalt in "Ketchup, Pickles, Sauces," the T. A. Snider Preserve Company was founded in 1879. Shown here are three examples of ephemeral advertising the company produced to promote their various products. While the company began in Cincinnati, Ohio, the 1920s vintage ad shows a ketchup bottle and bean can with labels indicating the company was then located in Chicago, Illinois.

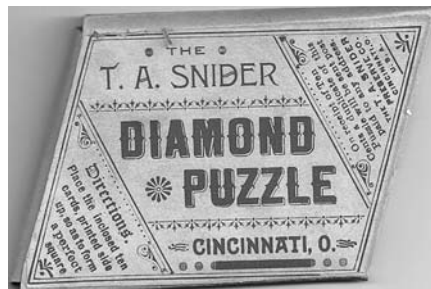
Submitted by Steve Ketcham



Likely given to stores as a promotional item, this multi-colored rug measures roughly 52 inches by 40 inches. Notice how the rug's image closely matches the upper portion of the magazine ad.



Circa 1890-1900 color lithographed, ten-piece puzzle.



Puzzle box.



Circa 1920 magazine ad.

**Oregon Grape Bitters**

The pink & white item is likely a counter-top change tray change tray. The caption should read: Wolters Bros. & Co. counter-top change tray advertising their Oregon Grape Bitters and Horseshoe Whiskey.

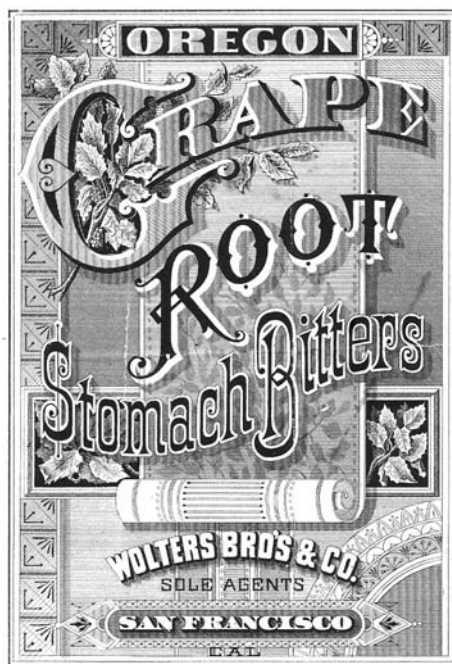
The second item: Two sides of a two-color gold watch fob given by Wolters Bros. to one of their biggest distributors.

Item three: An original label from San Francisco.

Item four: An 1888 letterhead from a Montana distributor of Oregon Grape Bitters, "The Great Rocky Mountain Remedy."

Item five: Pictured here is the rare Oregon Grape Bitters bottle with labels. This bottle is extremely rare, as are any of the go-withs. The company began offering the brand around 1885. The San Francisco version of the bottle is clear and does not turn sun-colored amethyst. The Deer Lodge, Montana, version of the bottle is known to turn amethyst.

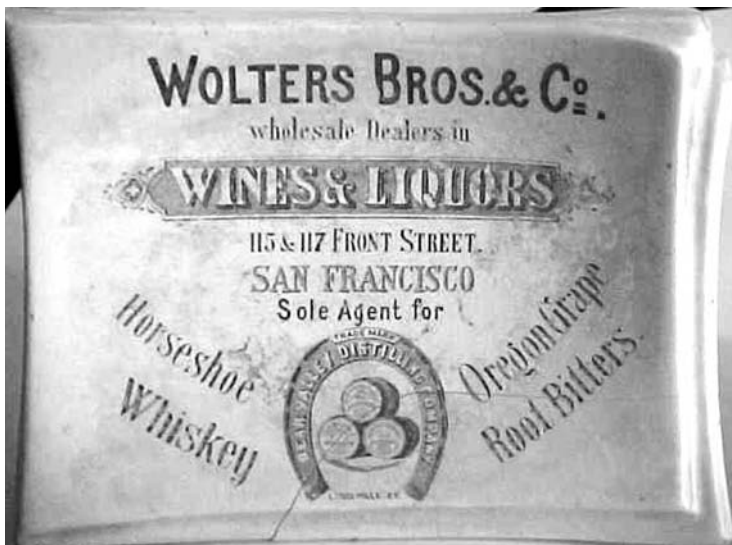
Submitted by Richard Siri



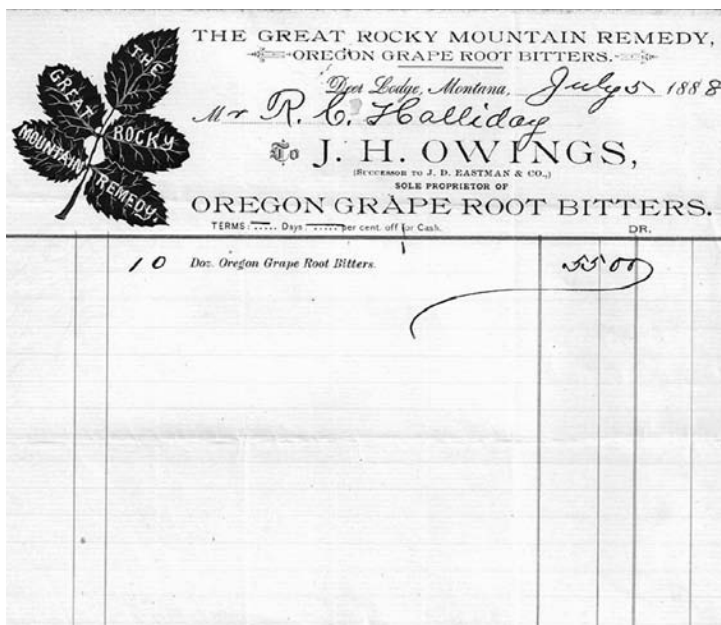
Item 3



Item 4



Item 1



Item 3



Item 2 (front and back)

"Paper Trail" is a regular feature which showcases the wide world of bottle-related ephemera, from trade cards and post cards to letterheads and blotters. Readers are encouraged to submit items for publication. Simply scan or photograph your item (JPG please), add a short paragraph or two about the item, and include a photo of the bottle to which it relates.

E-mail your contribution to:  
 s.ketcham@unique-software.com  
 or Ph: (952) 920-4205  
 or mail it to:  
 Steve Ketcham  
 PO Box 24114, Edina, MN 55424