

The first year's production was only 200 barrels. John Kopp left the partnership in 1884 to start the North Pacific Brewery in Astoria, Oregon. At this time, Henrich reorganized the brewery as Bayview Brewery Incorporated.

In 1892, a major merger with Albert Braun Brewing Association and Malting Company became one of the most widely distributed beer on the Pacific Coast.

In 1897, the North Pacific Brewery in Washington joined, followed in 1901 by Standard Brewing Company.

As of 1904, annual production of

Rainier Beer had reached 300,000 barrels per year. Distribution was now world wide. Bottlers such as John Rapp and Sons in San Francisco distributed Rainier Beer to their local areas.

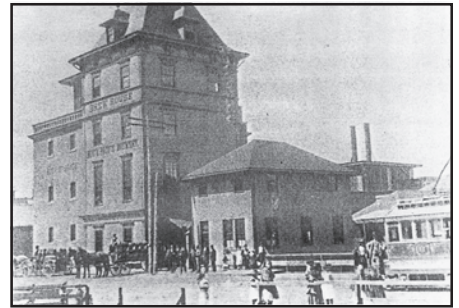
Andrew Henrich died in 1910 at only 54 years of age. His two sons took control and by 1914, Seattle Brewing and Malting was the largest industrial enterprise in Washington. 1916 brought prohibition to Washington and the brewery closed. The name "Rainier" was sold to a California brewery and was not used again until after prohibition ended.

North Pacific Brewery 1884-1916

by Dave Scafani

Astoria's largest and most successful brewery was established in 1884 by John Kopp.

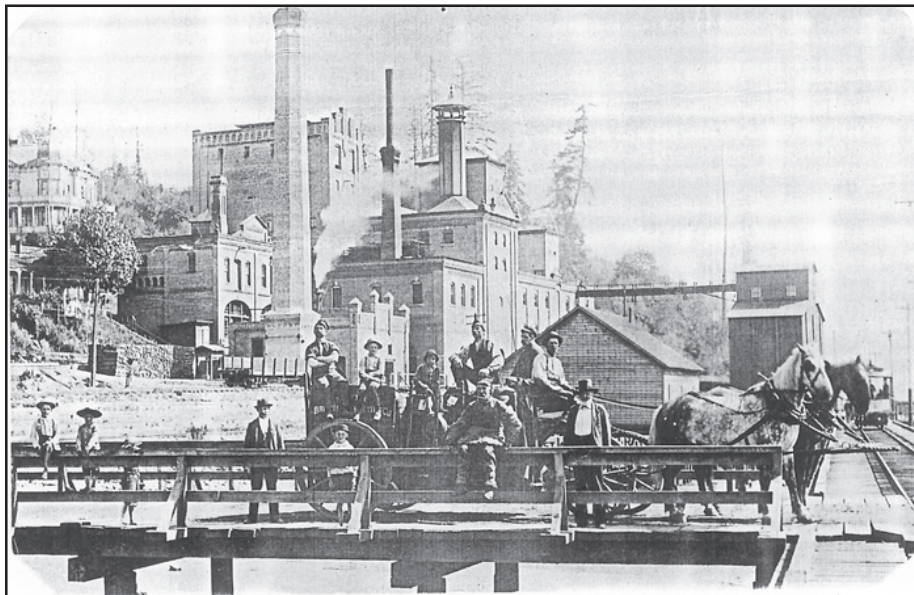
The previous year, he had started the Bayview Brewery in Seattle, which would eventually be part of the giant Seattle Brewing and Malting Company, producer of Rainier Beer.



The North Pacific Brewery, located at 31st and Franklin, gradually increased its annual production to 15,000.

The brewery was destroyed by fire in 1889, but was rebuilt larger and greatly improved. As business increased, a branch brewery was opened in Portland in 1905 at 19th and Upshur. A downtown Portland sales and distribution office was also opened.

All operations ceased with the coming of state prohibition in 1916.



Original Bayview Brewery Building, Seattle Brewing and Malting Wagon.



Rainier Beer advertisement.



1906 Rainier Beer Calendar

Dave Scafani,
416 Greenbrae Dr., Medford, OR 97504
scafaniind@cs.com.



Left: North Pacific Brewery bottles, circa. 1902-1916.

An older, rare blob-top exists with JOHN KOPP / JK / ASTORIA, ORE.

Below: Wagon horse's breast plate for North Pacific Brewery.

