

National Hotel built on site of Louisiana House that burned in 1862, Bordello in the 1860's, Gambling house in the 1960's where John Wayne lost \$50,000 in a poker game.

### **First in a series of California and Montana Mineral Survey field notes.**

All California Business License Data compiled from Department of Internal Revenue Records.

We have researched existing 1860's IRS records of all major Gold producing areas of California

2,600 California Gold Country Business Licenses have been located, available with ancestry.com subscription Link Below.

*Data is searchable by name, but not by business type*  
<https://search.ancestry.com/search/db.aspx?dbid=1264>

In addition to the California IRS Data, I have logged, from Montana Territory business license receipts, more than 4,700 records covering 1865 - 1886.

Newly formed Montana Territory, in 1865, created a licensing system modeled after the IRS system that was used to fund the Civil War.

### **140,000 Pages of Montana Territory Mineral Survey field notes**

Using Google Earth, we retrace these early mineral surveys utilizing field notes generated by U S Deputy Mineral Surveyors. We are long-time bottle collectors and artifact hunters. To increase our chances of artifact recovery we utilize the precise locations and dimensions of shafts, ditches, and other features on patented mining claims entered in these field notes. Research is ongoing in Montana, Nevada, and Arizona.

### **California Cadastral and Mineral Survey Field notes**

California Cadastral Survey field notes are available, but not online. Have researched cadastral surveys in and near Amador County. They show ditches, gulches, houses, sometimes mine shafts close to the survey lines which were a mile apart. A significant portion of the data in these field notes never appears on the township plats.

California BLM indicated they have more than ONE MILLION pages of cadastral survey data.

**MINERAL SURVEY DATA:** Mining law of 1872 mandates that Deputy Mineral Surveyor log positions, dimensions, and depths of shafts, locations of buildings etc. The mining act of 1866 had provisions to note locations of the shafts. NO REQUIREMENTS to log dimensions and depths of shafts.

Have done some limited research on early mineral surveys on Nevada's Comstock Lode. California data will show much more. My research on uptown Butte, Montana shows gulches under building, shafts in cellars, water ditches, creeks that have been diverted.

California is older, had glass houses blowing bottles in San Francisco. But it will also have many more shafts in cellars, diverted creeks, that became the resting place for great gold rush artifacts. All this info locked up in a few hundred thousand pages of mineral survey field notes.

If you have access to a promising site call or email

## Locating Mineral Survey Field notes and IRS DATA

Please contact us for more information regarding our huge database of California and Nevada business licenses. I can research all western state using mineral survey field notes available from the Bureau of Land Management. Business license data exists in IRS data bases except for much or most of the states in the Confederacy. Ohio data does not appear to exist.

We are interested in partnering with serious bottle diggers.

OUTHOUSEPATROL.COM has been featured on the Front Page of the Montana Standard May 23, 2011 Full Color above and below the fold, we are the headline "OUTHOUSE DIGGERS". Montana Magazine Mar/April 2011 with 4 pages color spread. Other Montana newspapers featuring us were Bozeman Daily Chronicle, The Madisonian, Butte Weekly, and twice in the Boulder Monitor.

Note the yellow pins that indicate the coordinates, dimensions, and depth of various shafts. Blue lines indicate courses of ditches and gulches. Green lines indicate boundaries of the Emma Lode. We had to retrace field notes to reestablish the boundaries of this and many other mining claims because of the extensive subdivision of this area. More than 1,200 mining surveys were conducted within a few miles of the Emma.

Under the mining law of 1872 any citizen reaching the age of 18 had the right to file a lode (hard rock) or a placer claim. However, the only way to obtain surface rights was, first, file a claim. Then

prove to the U S Deputy mineral surveyor you hired that you had done \$500 worth of work, "improvements" as they were called, on your claim. In general, a shaft 4x6x100 feet deep, normal ground, would be assessed at about \$5 per foot, meeting requirements. Timbered shafts were assessed at about \$10 per foot. A considerable number of patent application were rejected when they were short of the \$500 threshold. If approved, you paid the federal government \$5 an acre to get surface rights (patent) to a standard mining claim which was about 20 acres. Placer patents would cost you \$2 an acre.

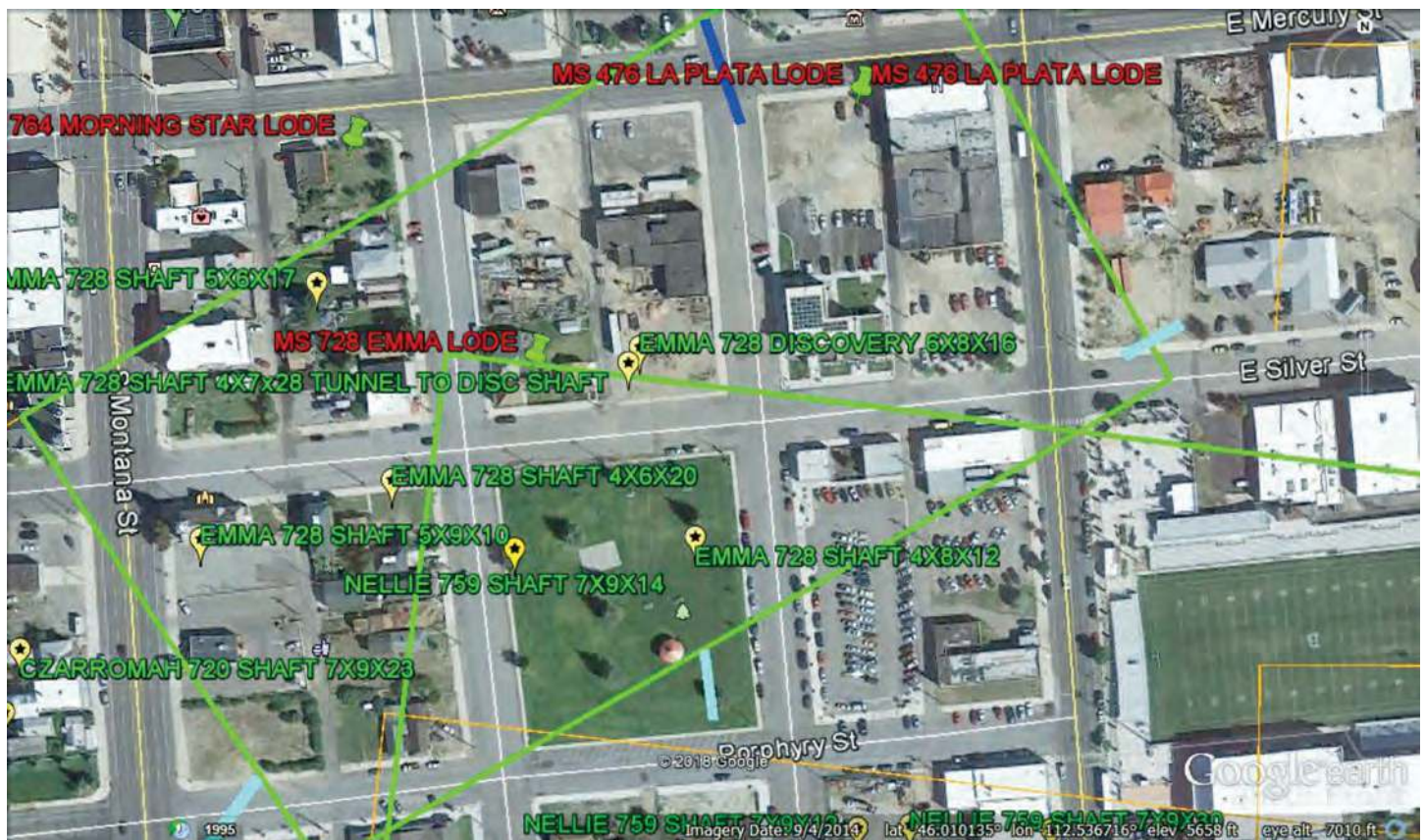
## California Counties Surveyed

• Amador • Butte • Calaveras • El Dorado • Nevada • Placer  
• Plumas • Sacramento • Shasta • Sierra • Siskiyou • Sierra

## Funding the Civil War

The Civil War income tax was the first tax paid on individual incomes by residents of the United States. It was a "progressive" tax in that it initially levied a tax of 3 percent on annual incomes of \$600 but less than \$10,000 and a tax of 5 percent on any income of \$10,000. In 1864 the rates and the ceiling dropped so that incomes between \$600 and \$5,000 were taxed at 5 percent, with a 10 percent rate on the excess over \$5,000. Annual licenses were required for bankers, auctioneers, wholesale and retail dealers, pawnbrokers, tobacconists, jugglers, confectioners, horse dealers, peddlers, apothecaries, photographers, lawyers, and physicians.

Hotels, Inns, and taverns were classified according to the annual rent or estimated rent, from a first-class establishment with



Google Earth Screenshot of our research on the Emma Lode Surveyed in 1879 located in Uptown Butte, Montana



a yearly rental of \$10,000 to an eighth-class hotel with a yearly rental of less than \$100, charged license fees \$200 to \$5 accordingly. Eating houses paid \$10 per year for a license.

### History of Jackson, Amador County, California

In 1854 Amador County was created, named after native Californian Jose Maria Amador. Amador County's largest city is Jackson, founded in 1848. The early gold rush camp, like others located along Highway 49, destroyed by fire in 1862. The city was rebuilt with as many as 42 of the Civil War era structures still standing along main street. The town originally carried the name Bottileas given by the Mexican and Chilean miners. These miners were apparently impressed with the large numbers of bottles discarded around the spring. The site of the original well is memorialized by a plaque behind the National Hotel at the foot of main street.

### Amador County Business Licenses issued Towns and Trailside Businesses

7h Ranch, Amador City, Aqueduct City, Buena Vista, Butte City, Clinton, Copper Hill, Dash Store, Dayton, Drytown, Enterprise, Fiddletown, Forest Home, Forest House, Gabe, Huntsville, Indian Creek, Ione City, Ione Valley, Jackson, Jackson Gate, Lower Rancheria, Mineral City, Mountain Springs, Mount E? Gulch, Muletown, Newtonville, Pine Grove, Pokerville, Ranchirien, Rich Bar, Slabtown, Sutter Creek, Township Number 1, Volcano, Willow Springs

Have ownership, business type, for all above.

For more information contact: Reg Shoeman, (C) 515.720.0628 or (E): outhousepatrol@yahoo.com

### GOLD COUNTRY BUSINESS DENSITY BY COUNTY 1863

1863	HOTELS	RETAIL LIQ	WHO LIQ	LIVERY	EATERY	APOTHECARY
Amador	17	131	1	9	7	
Butte	51	116	5	4	5	
El Dorado	46	109		1		
Nevada	53	170	9	9	9	5
Placer	23	131	2	7	11	2
Shasta	11	66		3	2	
Sierra	52	168		14	2	2
Yuba	9	14		1		
Calaveras	23	138		9	14	3
Sacramento	1	5				
	286	1048	17	55	50	14

### JACKSON IRS BUSINESS LICENSES ISSUED 1863 & 1866

COUNTY	TOWN	YEAR	LICENSEE	BUSINESS	FEE
Amador	Jackson	1863	Ah Chong & Co	Liquor Retail	\$13.33
Amador	Jackson	1863	Ah Chow	Liquor Retail	\$13.33
Amador	Jackson	1866	Ah Ping	Liquor Retail	\$25
Amador	Jackson	1866	Ah Ping	Liquor Retail	\$13.33
Amador	Jackson	1863	Ah Pung	Liquor Retail	\$13.33
Amador	Jackson	1866	Ah Pung	Liquor Retail	\$25
Amador	Jackson	1866	Ah Sam	Liquor Retail	\$25
Amador	Jackson	1866	Ah Why	Eating House	\$6.67
Amador	Jackson	1866	Allen H W	Hotel	\$25

COUNTY	TOWN	YEAR	LICENSEE	BUSINESS	FEE
Amador	Jackson	1866	Allen H W	Liquor Retail	\$25
Amador	Jackson	1866	Allen H W	Liquor Retail	\$13.33
Amador	Jackson	1866	Antipia Rocca	Liquor Retail	\$13.33
Amador	Jackson	1866	Aros Longhena	Liquor Retail	\$25
Amador	Jackson	1863	Ballows Santer	Liquor Retail	\$20
Amador	Jackson	1863	Beritt Julius	Liquor Retail	\$13.33
Amador	Jackson	1863	Borger Phelps	Brewer	\$16.67
Amador	Jackson	1866	Brandt & White	Eating House	\$10
Amador	Jackson	1866	Brandt & White	Liquor Retail	\$25
Amador	jackson	1866	Brummel M	Liquor Retail	\$25
Amador	Jackson	1866	Brummel M	Liquor Retail	\$13.33
Amador	Jackson	1866	Caminetta B	Liquor Retail	\$25
Amador	Jackson	1863	Carmenite B	Liquor Retail	\$13.33
Amador	Jackson	1863	Carroll J	Hotel	\$16.67
Amador	Jackson	1863	Carroll J	Liquor Retail	\$13.33
Amador	Jackson	1866	Carroll James	Liquor Retail	\$25
Amador	Jackson	1863	Chan Sing & Co	Liquor Retail	\$13.33
Amador	Jackson	1866	Chichazola A	Liquor Retail	\$25
Amador	Jackson	1866	Coney Leonard	Apothecary	\$10
Amador	Jackson	1866	Davis & Durham	Liquor Retail	\$25
Amador	Jackson	1866	Evans & Askey	Hotel	\$15
Amador	Jackson	1866	Evans & Askey	Hotel	\$25
Amador	Jackson	1866	Evans & Askey	Liquor Retail	\$25
Amador	Jackson	1866	Evans & Askey	Liquor Retail	\$20
Amador	Jackson	1863	Foo Kee	Liquor Retail	\$13.33
Amador	Jackson	1866	Foo Kee	Liquor Retail	\$25
Amador	Jackson	1866	Genochis Henry	Liquor Wholesale	\$50
Amador	Jackson	1863	Ginochio Henry & Co	Liquor Retail	\$13.33
Amador	Jackson	1863	Girdet Mrs C	Liquor Retail	\$13.33
Amador	Jackson	1866	Hammond C T	Liquor Retail	\$25
Amador	Jackson	1863	Hoffman F	Livery	\$6.67
Amador	Jackson	1866	Ingalls C H	Apothecary	\$10
Amador	Jackson	1863	Keshler A	Liquor Retail	\$13.33
Amador	Jackson	1863	Krus George	Liquor Retail	\$13.33
Amador	Jackson	1863	Kurezyn Charles	Liquor Retail	\$13.33
Amador	Jackson	1866	Laird John	Liquor Retail	\$25
Amador	Jackson	1863	Lejune C	Eating House	\$6.67
Amador	Jackson	1863	Lejune C	Liquor Retail	\$13.33
Amador	Jackson	1863	Lelippe J	Liquor Retail	\$13.33
Amador	Jackson	1863	Levinsky Bros	Liquor Retail	\$13.33
Amador	Jackson	1866	Lunsky Bros	Liquor Retail	\$25
Amador	Jackson	1863	Morcean Romald	Liquor Retail	\$13.33
Amador	Jackson	1866	Muldoon Edward	Liquor Retail	\$25
Amador	Jackson	1866	Palmer E	Livery	\$10
Amador	jackson	1863	Palmer E C	Livery	\$6.67
Amador	Jackson	1863	Roberts Wm	Liquor Retail	\$13.33
Amador	Jackson	1863	Rocca F	Liquor Retail	\$13.33
Amador	Jackson	1863	Rogus & Kaffe	Liquor Retail	\$13.33
Amador	Jackson	1863	Rogus John	Liquor Retail	13.33
Amador	Jackson	1863	Sanguinetti B & Co	Liquor Retail	\$13.33
Amador	Jackson	1866	Sauguenitta B	Liquor Retail	\$25
Amador	Jackson	1863	Schlachter Wm	Liquor Retail	\$13.33
Amador	Jackson	1863	Steckler & Mathis	Liquor Retail	\$13.33
Amador	Jackson	1866	Stickler Charles	Liquor Retail	\$25
Amador	Jackson	1866	Sung Lee	Liquor Retail	\$25
Amador	Jackson	1863	Tellie Louis	Liquor Retail	\$13.33
Amador	Jackson	1863	Tie Whah	Liquor Retail	\$13.33
Amador	Jackson	1863	Trenschel A	Brewer	\$16.67
Amador	Jackson	1863	Trull Henry	Hotel	\$33.33
Amador	Jackson	1863	Trull Henry	Liquor Retail	\$13.33
Amador	Jackson	1863	White & Brandt	Eating House	\$6.67
Amador	Jackson	1863	White & Brandt	Liquor Retail	\$13.33
Amador	Jackson	1863	White George	Liquor Retail	\$13.33
Amador	Jackson	1866	White George	Liquor Retail	\$25
Amador	Jackson	1866	Wright & Davis	Liquor Retail	\$20
Amador	Jackson	1863	Yet Chin	Eating House	\$6.67

