

Iowa Antique Bottleers, 55th Annual Show and Sale,
Saturday June 21st, 2025
JOHNSTON LIONS CLUB, 64th Place and Merle Hay Road
JOHNSTON, Iowa

Dealer set up/Early Admission 6:00-8:00 am, Show Closes 2:00 pm

Sales Tables Sales tables rent for \$25.00. Two dealers per table in the sales area during setup and sale. Tables should be set up by 8:00 am & remain set up until 2:00 pm. Confirmation of contract sent by return mail, phone call or e-mail.
Make Check Payable to: Iowa Antique Bottleers

Merchandise Types of merchandise that may be sold: antique bottles, fruit jars, pottery and stoneware, advertising items, marbles, pop and beer cans, minerals, jewelry, Beer and pop signs, Brewerianna, Relics other small collectibles.

Displays Display space is available in 8 foot/6 foot sections. One section per display. Electrical outlets are available.
Awards will be given in the following areas:
1. "Doc" Herron Award – Most Researched Display
2. Bottle Display Award
3. Mark of the Potter- Best Stoneware Display
4. Max Jones Memorial Jar Award – Fruit Jars
5. Katie Foglesong Memorial Relics and Collectibles Award
6. Young Peoples Award – General, Collectors Under 18 years of age
7. Peoples Choice – General Best Overall Display
Display set up 6:00 am, should remain up until 2:00 pm

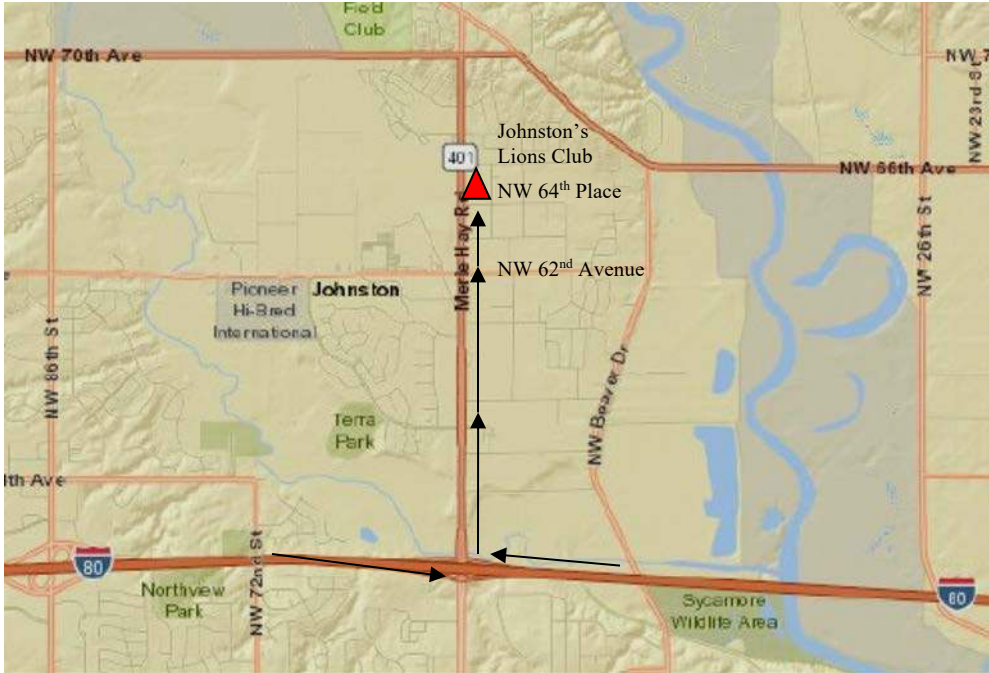
Accommodations Host Hotel:

Hospitality

Show Contacts: Mark C. Wiseman 515 344-8333 MARKCWISEMAN@MSN.COM
President Joyce Jessen 515-979-5216

Mail Table Payment To: Iowa Antique Bottleers, 3505 Sheridan Avenue, Des Moines, Iowa 50310

(Iowa Antique Bottleers, and Johnston Lions Club assume no responsibility for stolen, damages , or lost items)



For Further Info: Mark C. Wiseman, cel 515-344-8333, MARKCWISEMAN@MSN.COM

President Joyce Jessen 515-979-5216

Mail Payments Reservations To: Iowa Antique Bottleers, 3505 Sheridan Ave., Des Moines, Iowa 50310

Dealer Name: _____

Helper Name: _____ Hometown: _____

Dealer Address: _____ Phone: _____

City: _____ State: _____ Zip: _____ Cel: _____

E-Mail: _____

Checks made payable to: Iowa Antique Bottleers

of Sales Tables: _____ X \$25.00 each = _____

Display Space Needed: _____

Type of Display: _____

Special Needs: _____